

# MEDICAL OFFICE SUITE AVAILABILITY

## CONCORD MEDICAL PLAZA

2425 EAST ST • 2299 BACON ST

### 2425 East Street:

#### First Floor:

Suite 1: 1,328 SF

Suite 2: 674 SF

Suite 8: 773 SF

Suites can be combined for max. contiguous 2,775 SF. East Street visibility and signage.

#### Second Floor:

Suite 10: 1,016 SF

Suite 14: 1,620 SF



### 2299 Bacon Street:

#### First Floor:

Suite 1: 4,556SF

Suite 1 can be combined with Suite 2 for 5,575 SF contiguous.

#### Second Floor:

Suite 10: 1,370 SF

Suite 11: 1,011 SF

Suites can be combined for 2,381 SF.

#### MAJOR RENOVATIONS COMPLETED:

- Exterior Painting
- New Upgraded Interiors
- New Monument and Tenant Signage
- Complete Landscape Renovation
- New Exterior Lighting
- Elevator Upgraded
- New HVAC Systems
- New Roof



KLINGBEIL MEDICAL PARTNERS, LLC

Lisa Aguirre 951-734-0100 / laguirre@kmpre.com

◆ Generous Tenant Improvement Packages Available

◆ Reserved Staff Parking

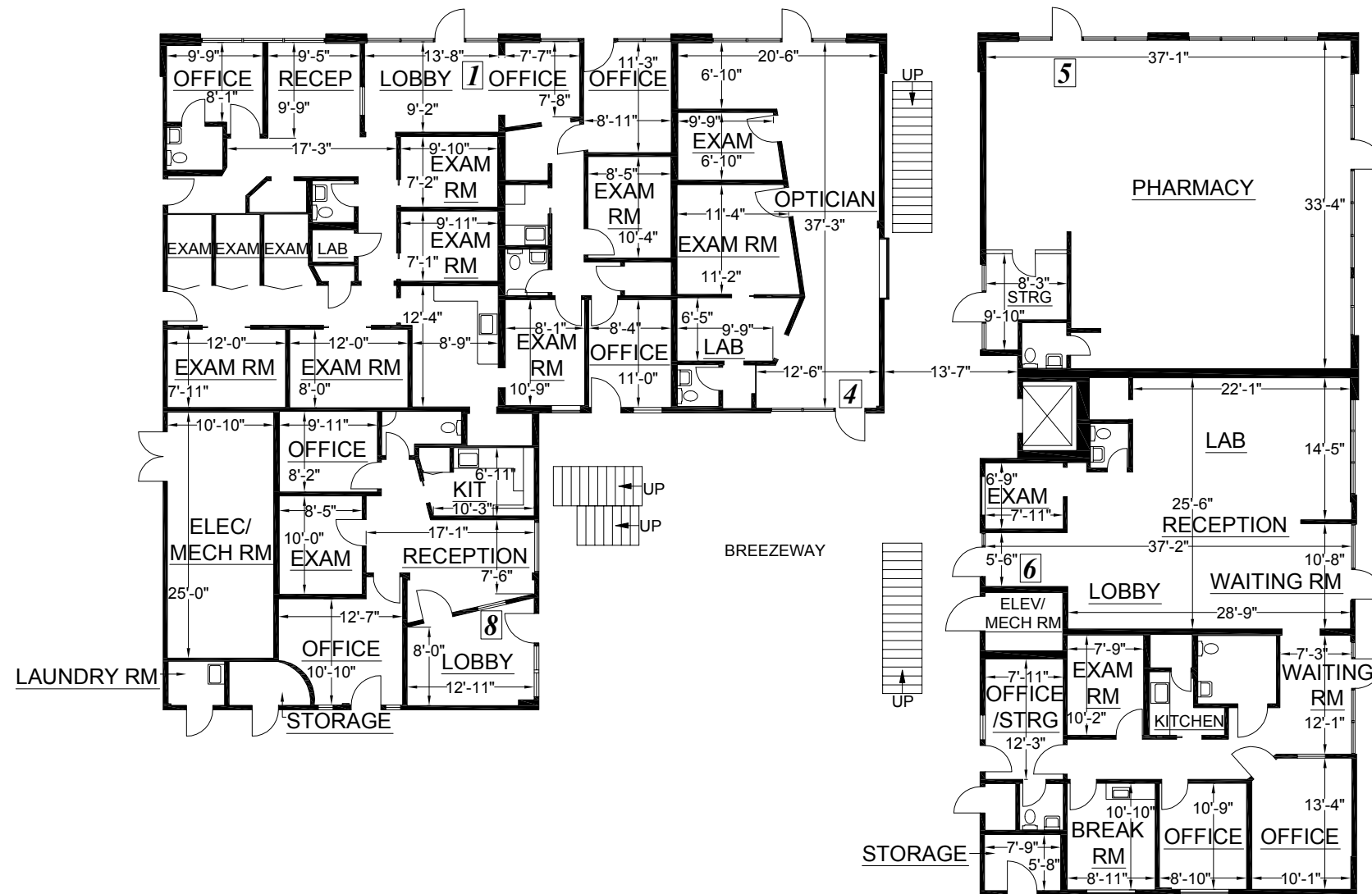
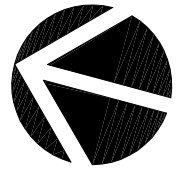
◆ Across the street from John Muir Concord Campus

◆ On-Site Security Guard

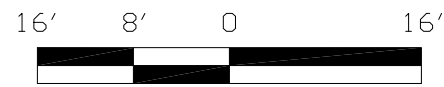
◆ Superior Property Management

**FLOOR PLAN**

*EAST STREET*



*BACON STREET*



SCALE: 1/16" = 1' - 0"

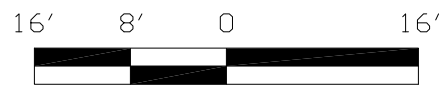
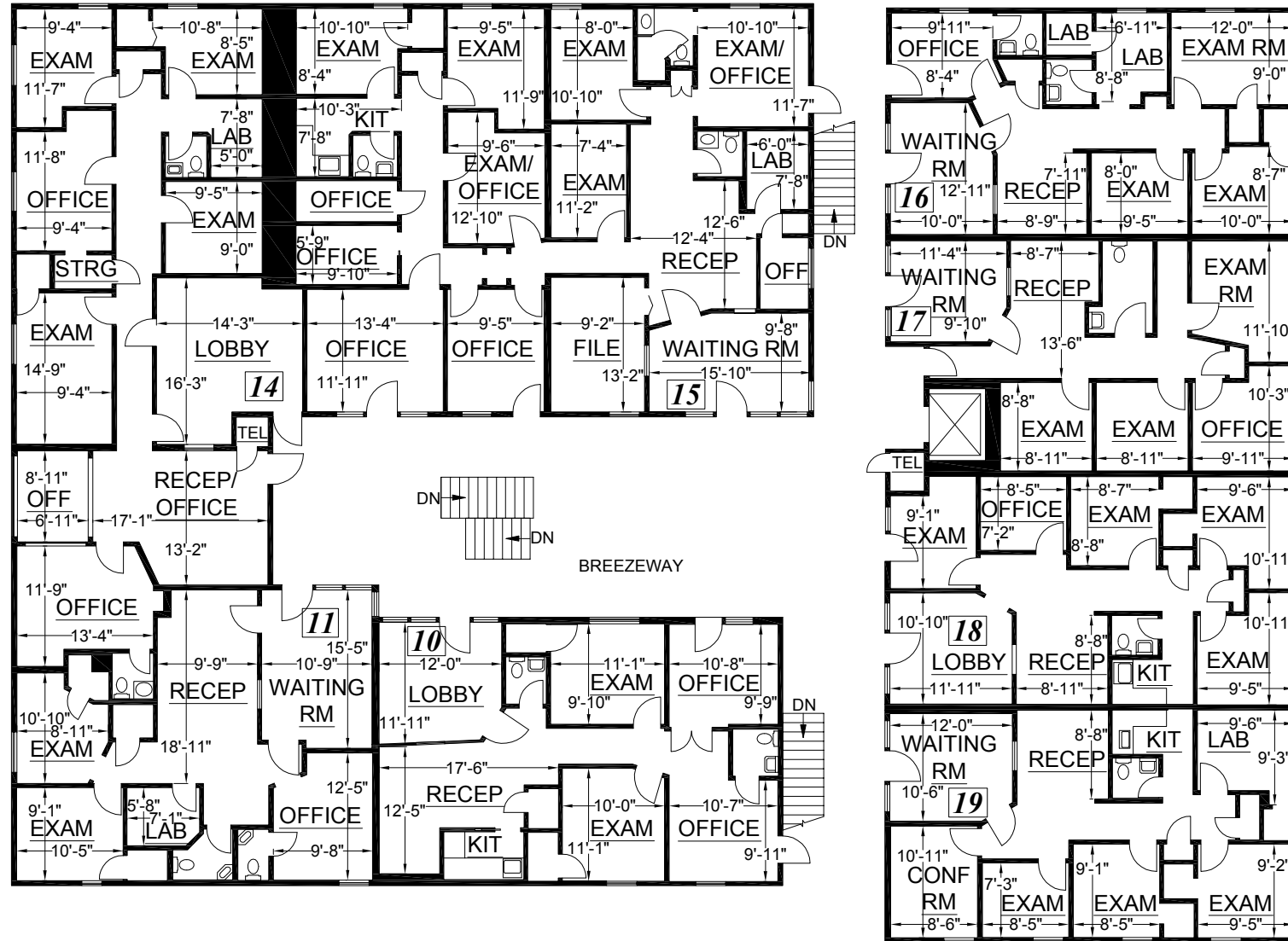
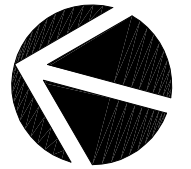
PREPARED FOR:  
 Klingbeil Capital Management  
 615 Front Street  
 San Francisco, CA 94111  
 Tel (415) 398-0765  
 Fax (415) 398-0741

**BACON MEDICAL (BACON EAST)**  
**2425 EAST STREET**  
**CONCORD, CA**

**SECOND FLOOR**

(As Measured: July 2008)

**FLOOR PLAN**



SCALE: 1/16" = 1' - 0"

Survey Accuracy: +/- 0.10 %

LASERtech® is a registered US trademark of LaserTech® Floorplans Ltd.  
 Copyright 1998-2008 LaserTech® Floorplans Ltd., All Rights Reserved



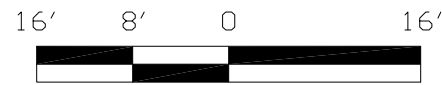
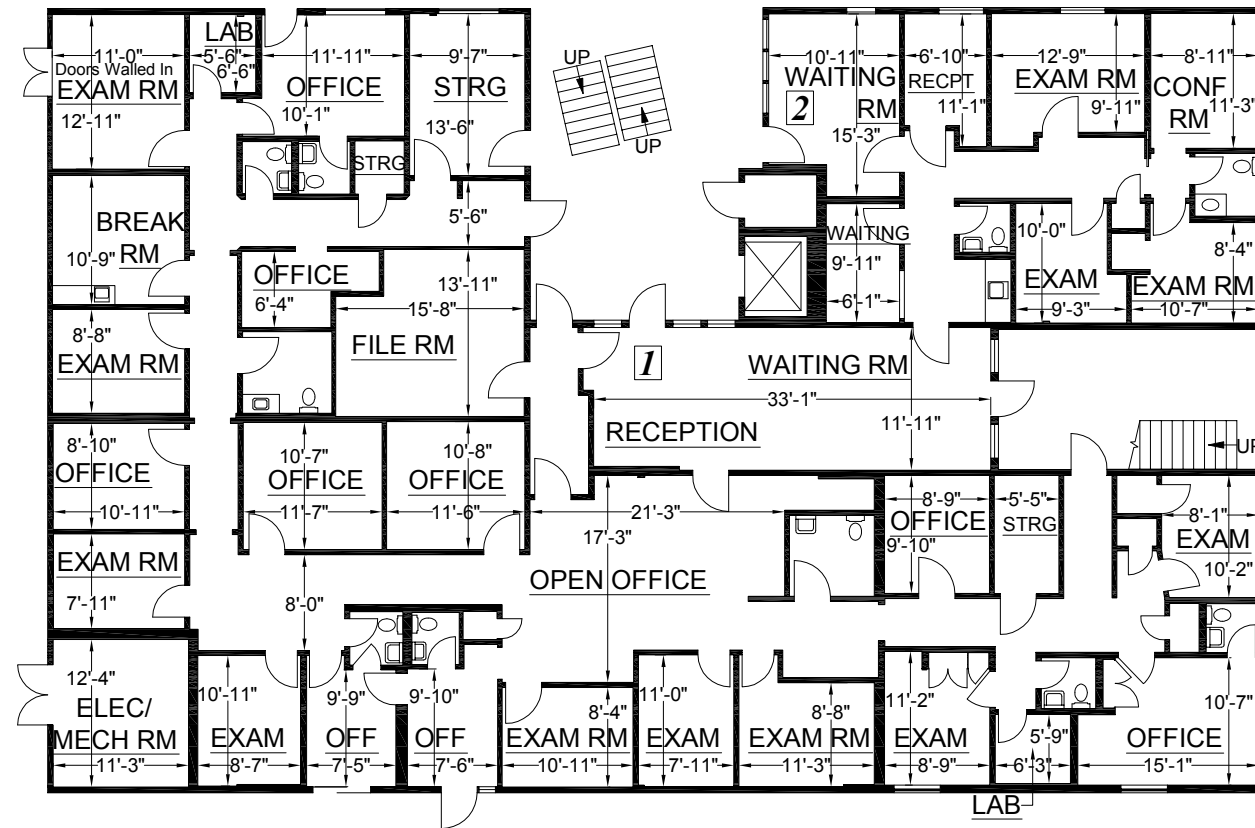
TEL: (888) 393-6655  
 FILE: 8-202

PREPARED FOR:  
 Klingbeil Capital Management  
 615 Front Street  
 San Francisco, CA 94111  
 Tel (415) 398-0765  
 Fax (415) 398-0741

**BACON MEDICAL (BACON WEST)**  
**2299 BACON STREET**  
**CONCORD, CA**

**FIRST FLOOR**  
 (As Measured: July 2008)

**FLOOR PLAN**



SCALE: 1/16" = 1' - 0"

Survey Accuracy: +/- 0.09 %

LASERtech® is a registered US trademark of Lasertech® Floorplans Ltd.  
 Copyright 1998-2008 Lasertech® Floorplans Ltd., All Rights Reserved



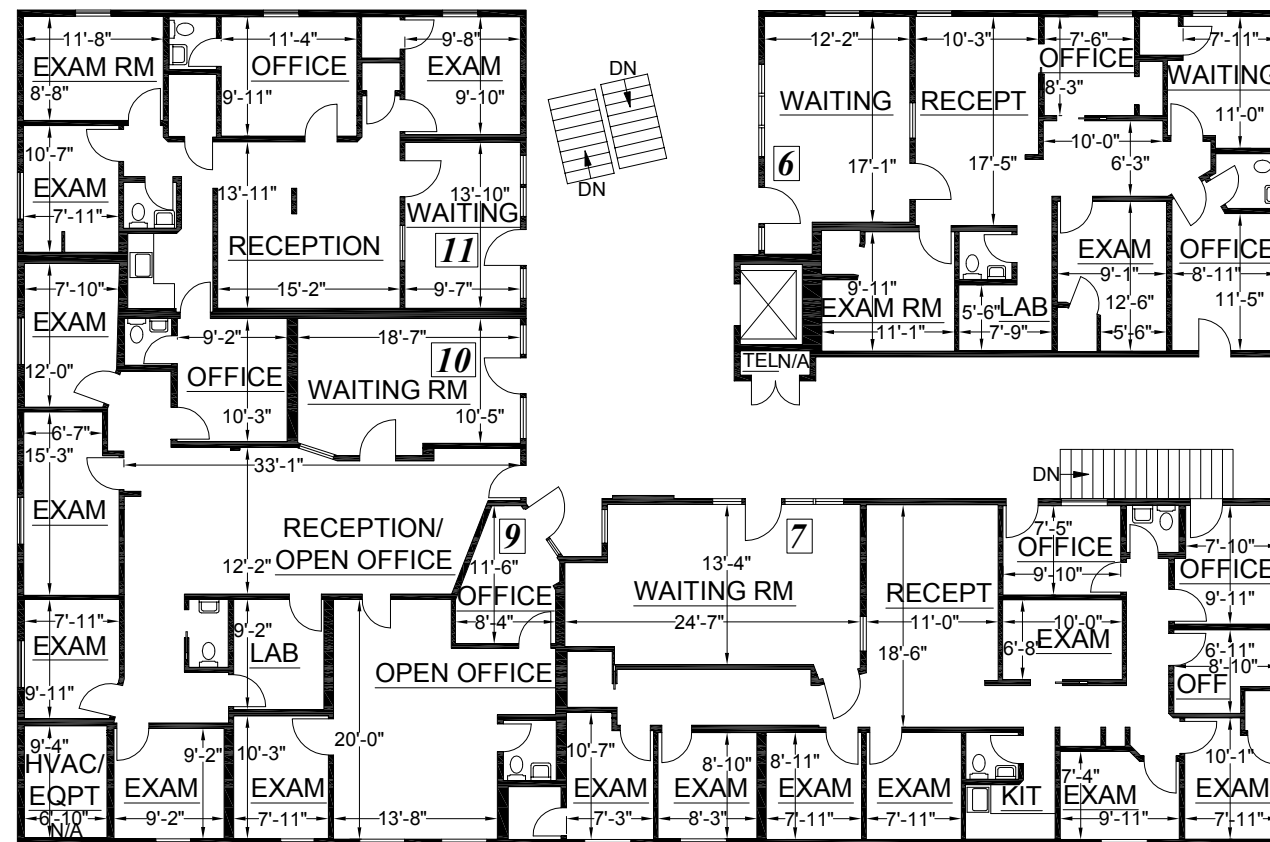
TEL: (888) 393-6655  
 FILE: 8-202

PREPARED FOR:  
 Klingbeil Capital Management  
 615 Front Street  
 San Francisco, CA 94111  
 Tel (415) 398-0765  
 Fax (415) 398-0741

**BACON MEDICAL (BACON WEST)**  
**2299 BACON STREET**  
**CONCORD, CA**

**SECOND FLOOR**  
 (As Measured: July 2008)

**FLOOR PLAN**



SCALE: 1/16" = 1' - 0"

Survey Accuracy: +/- 0.10 %

LASERtech® is a registered US trademark of Lasertech® Floorplans Ltd.  
 Copyright 1998-2008 Lasertech® Floorplans Ltd., All Rights Reserved



TEL: (888) 393-6655  
 FILE: 8-202