

# 7750 Pardee Lane



7750 Pardee Lane is an exceptionally well maintained building with ample parking. Offering excellent 880 freeway access, one minute from Hegenberger off-ramp, this Oakland Airport building has a location that's hard to beat on a beautiful tree-lined street.

Office Spaces Available  
Rate: Negotiable

Suite 105: 1,844 RSF

Suite 110: 1,230 RSF

Suite 140: 1,746 RSF

Suite 250: 4,060 RSF

2nd Floor Exec. Offices:  
\$950/month

FOR MORE INFORMATION CONTACT

**Brad Cavanagh & Karen Cavanagh**

Lic # 01054557

Lic # 01387141

(925) 945-1100



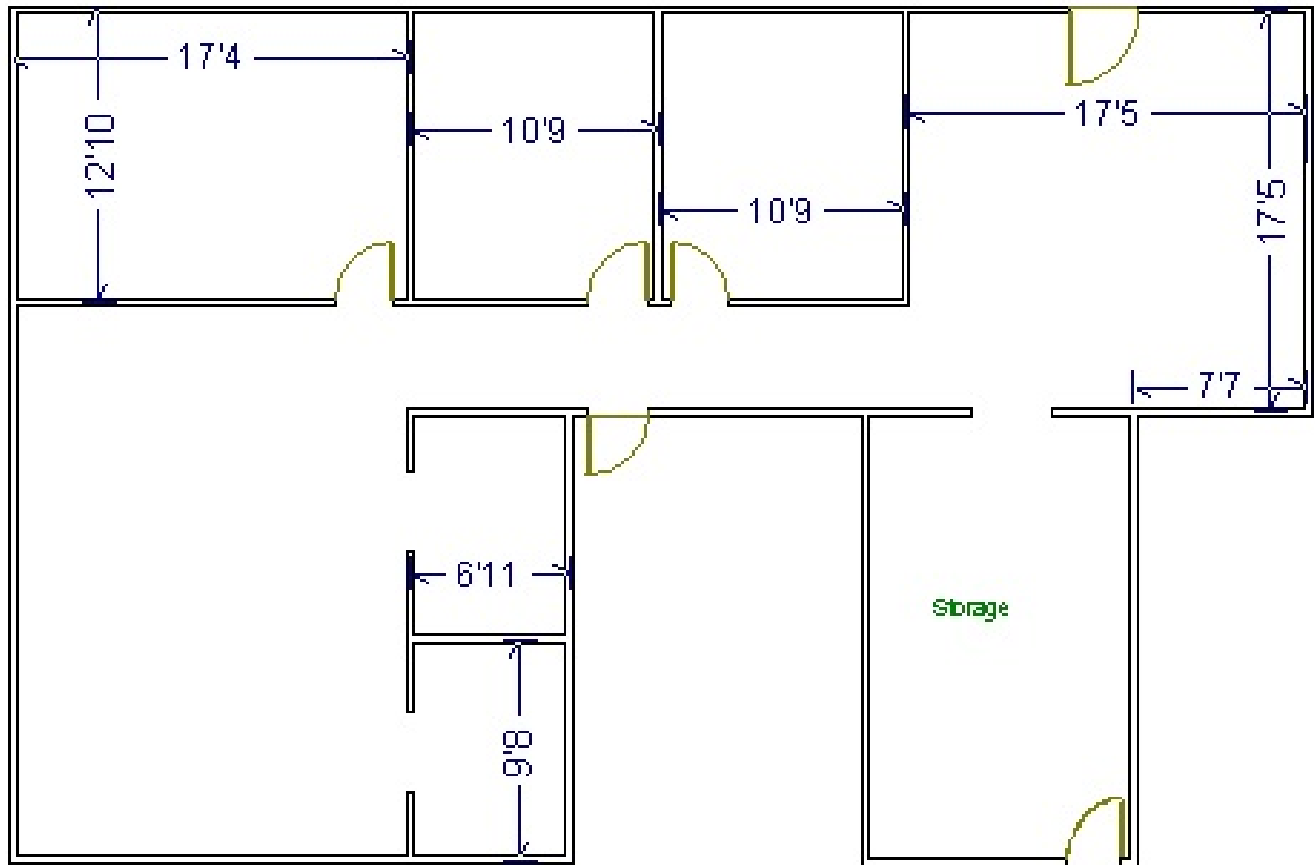
**Monte Vista Commercial**  
REAL ESTATE SERVICES

1501 North Broadway, Suite 320, Walnut Creek, CA 94596 Phone: 925-945-1100 Fax: 925-296-9629  
Lic # 01310249

7.1.11

# 7750 Pardee Lane - Suite 105

1,844 Rentable Square Feet



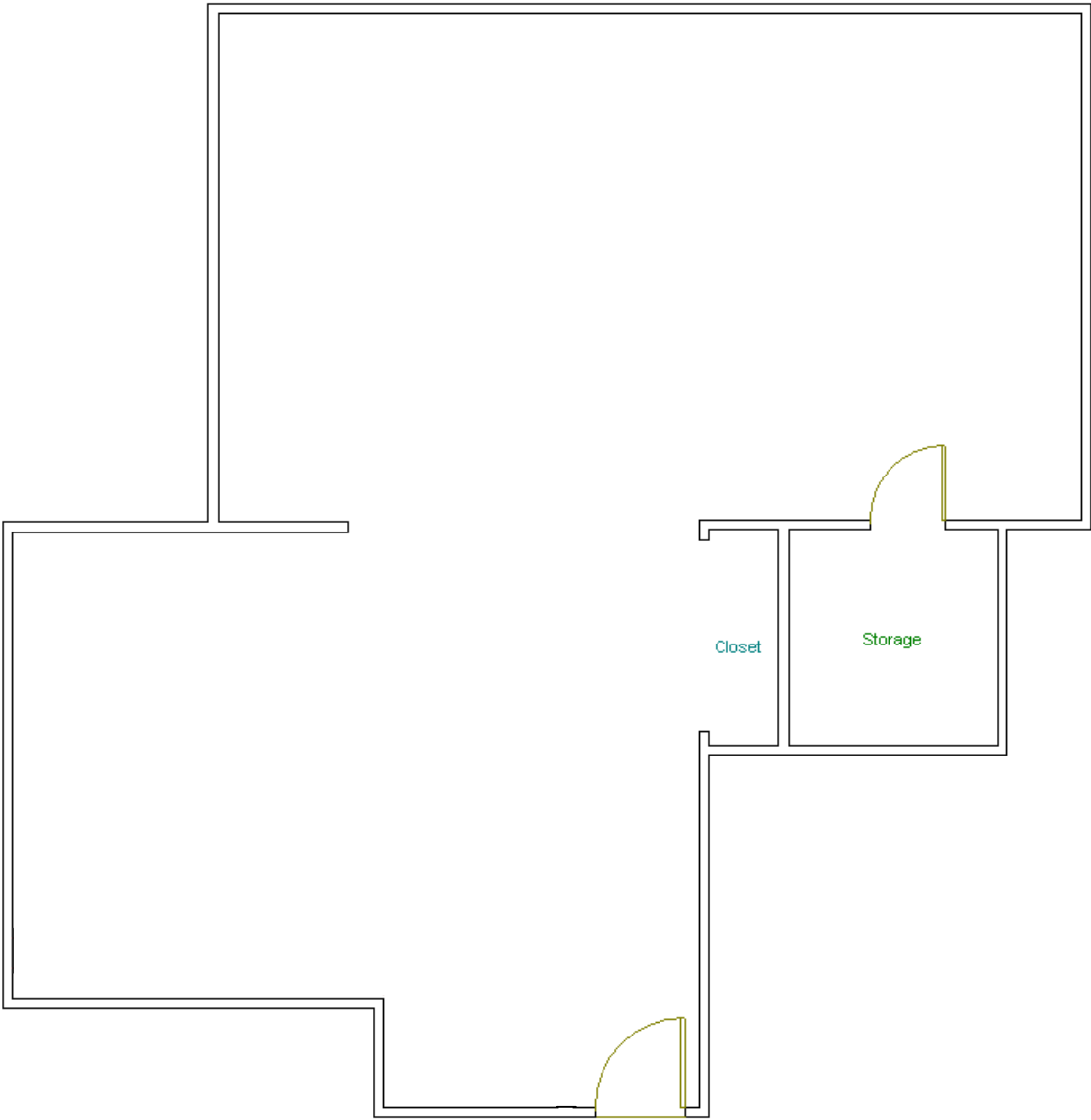
**Monte Vista Commercial**  
REAL ESTATE SERVICES

1501 North Broadway, Suite 320, Walnut Creek, CA 94596 Phone: 925-945-1100

Lic # 01310249

# 7750 Pardee Lane - Suite 110

1,230 Rentable Square Feet



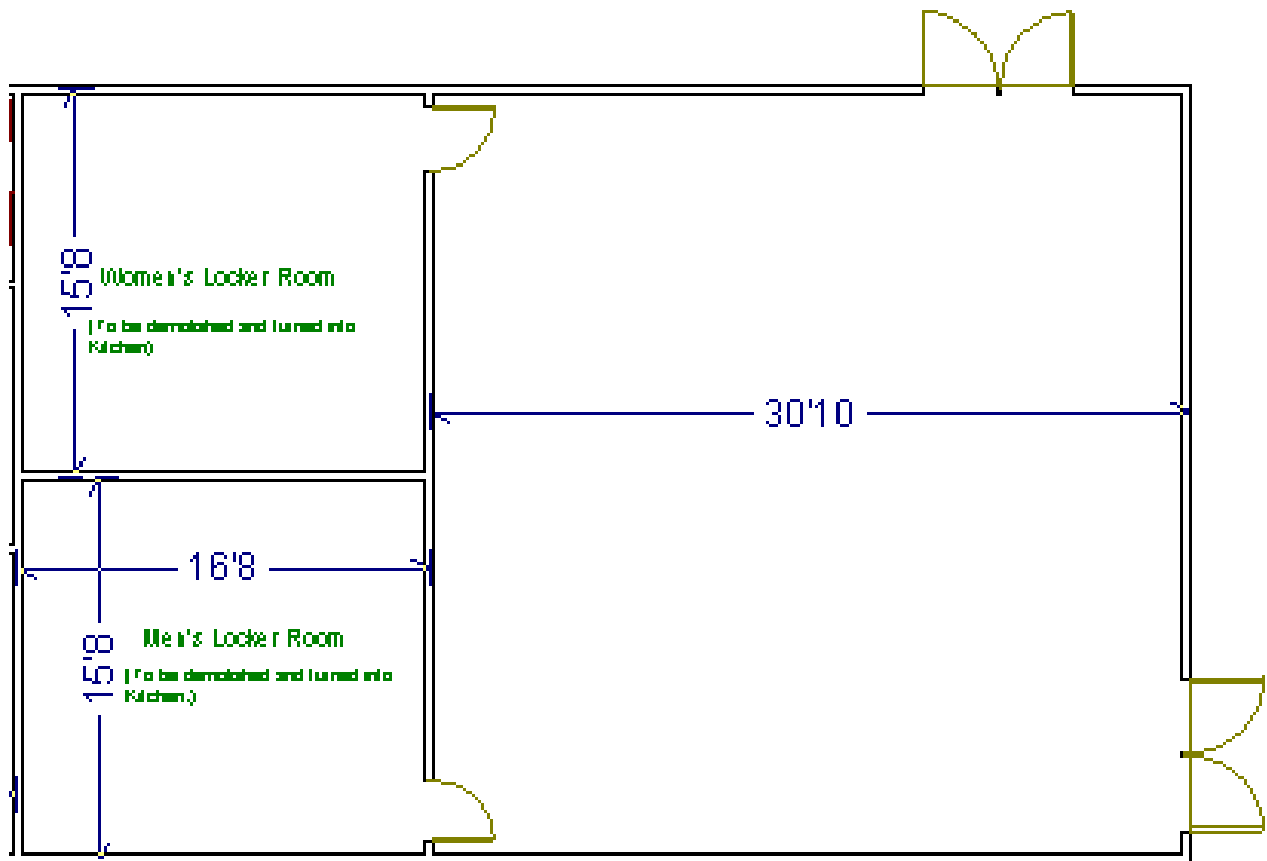
**Monte Vista Commercial**  
REAL ESTATE SERVICES

1501 North Broadway, Suite 320, Walnut Creek, CA 94596 Phone: 925-945-1100

Lic # 01310249

# 7750 Pardee Lane - Suite 140

1,746 Rentable Square Feet



**Monte Vista Commercial**  
REAL ESTATE SERVICES

1501 North Broadway, Suite 320, Walnut Creek, CA 94596 Phone: 925-945-1100

Lic # 01310249

# 7750 Pardee Lane - Suite 250

4,060 Rentable Square Feet



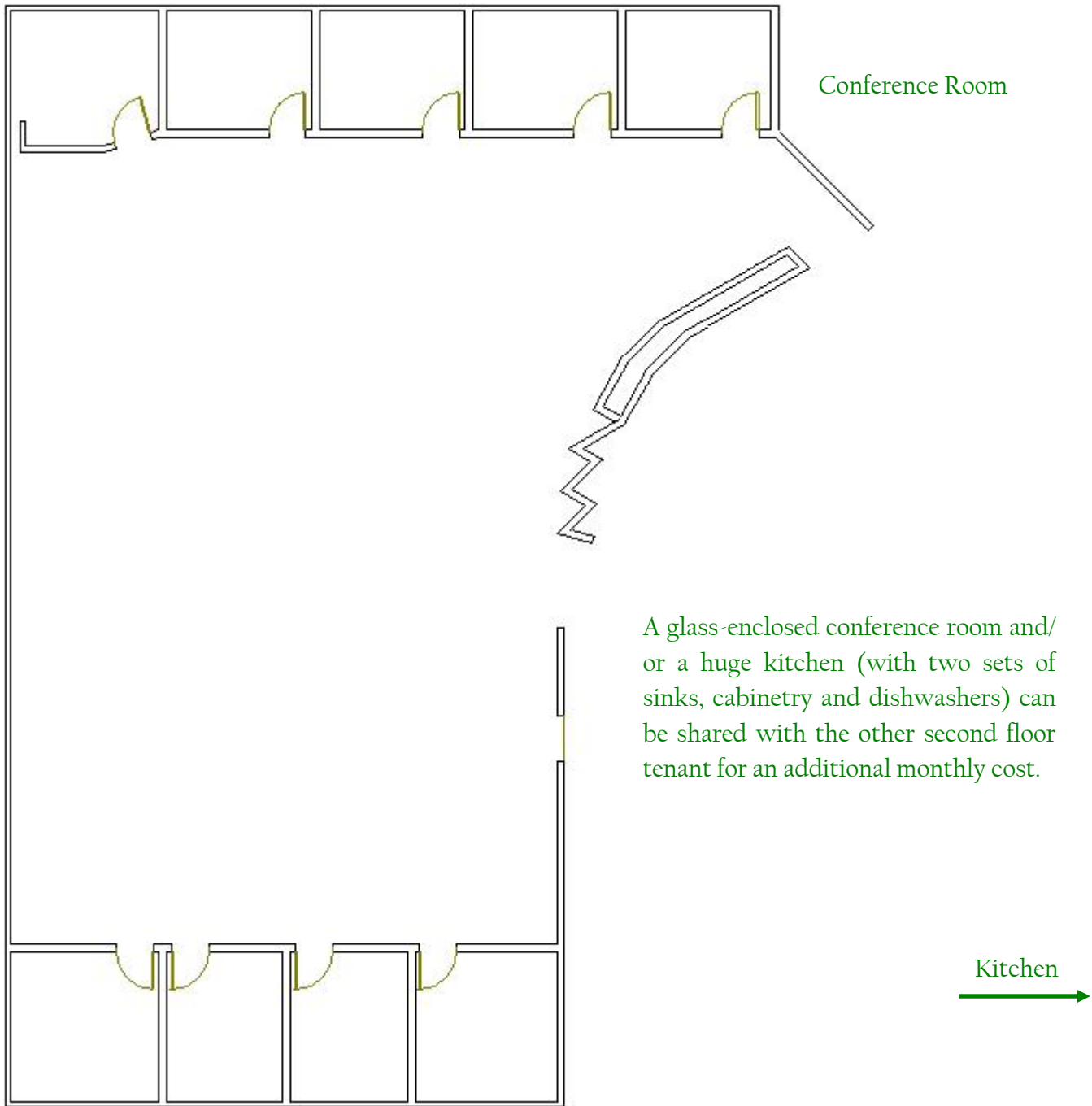
**Monte Vista Commercial**  
REAL ESTATE SERVICES

1501 North Broadway, Suite 320, Walnut Creek, CA 94596 Phone: 925-945-1100

Lic # 01310249

# 7750 Pardee Lane - Suite 250

4,060 Rentable Square Feet



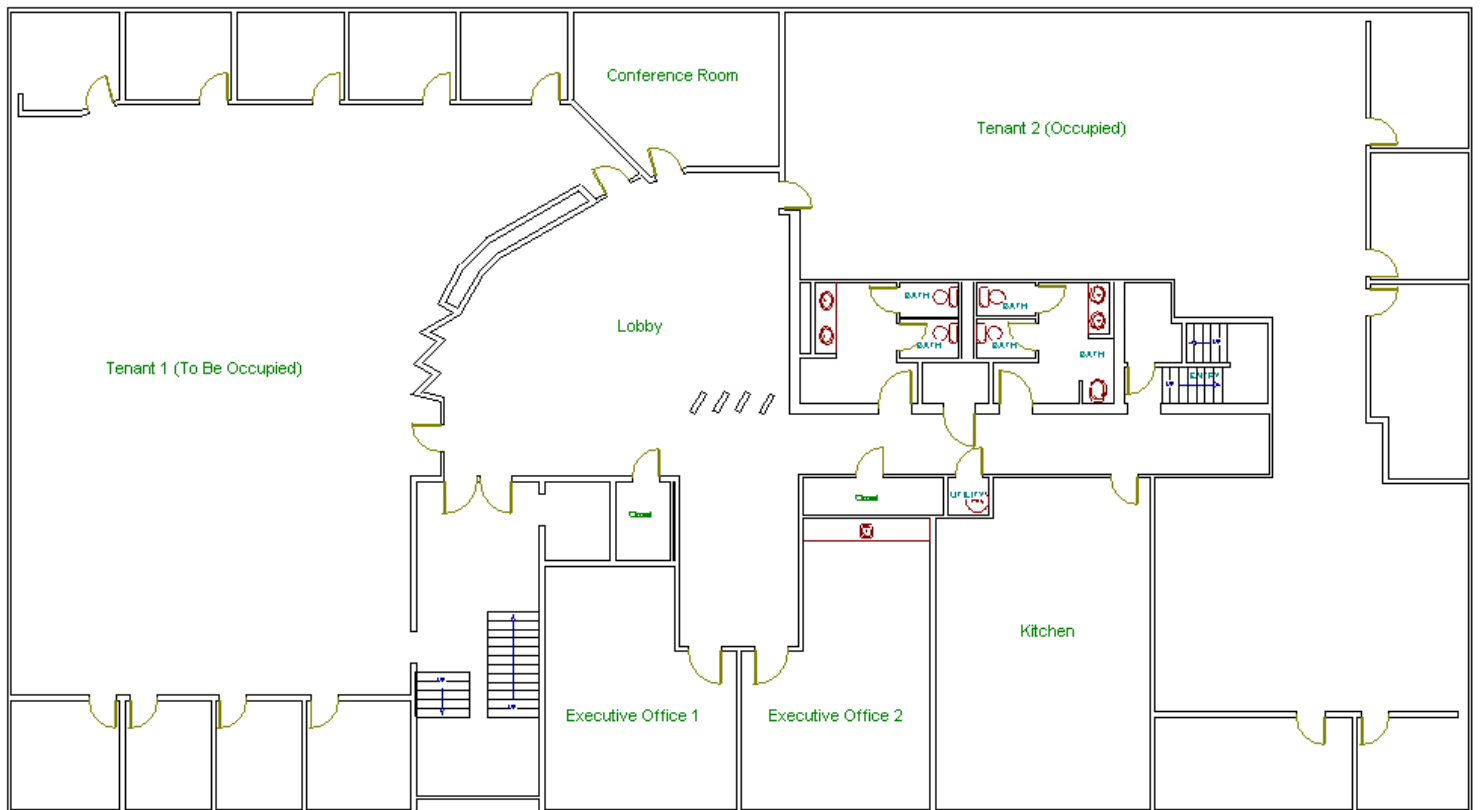
**Monte Vista Commercial**  
REAL ESTATE SERVICES

1501 North Broadway, Suite 320, Walnut Creek, CA 94596 Phone: 925-945-1100

Lic # 01310249

# 7750 Pardee Lane

## Second Floor Executive Offices



Shared Lunch Room, Conference Room and Lobby.



**Monte Vista Commercial**  
REAL ESTATE SERVICES

1501 North Broadway, Suite 320, Walnut Creek, CA 94596 Phone: 925-945-1100

Lic # 01310249